



See what Excel can do.

SERIES: generation
PLAN: DEVLYN

excelhomes.com



DIVE INTO THE DIVINE DEVLYN

©2008 Excel Homes

The Devlyn home plan is geared to today's casual lifestyle with solid, quality craftsmanship evident throughout. Featuring 4 bedrooms, including a large master suite, and 3½ baths, this American/Craftsman style home provides an open family room with optional fireplace, two-

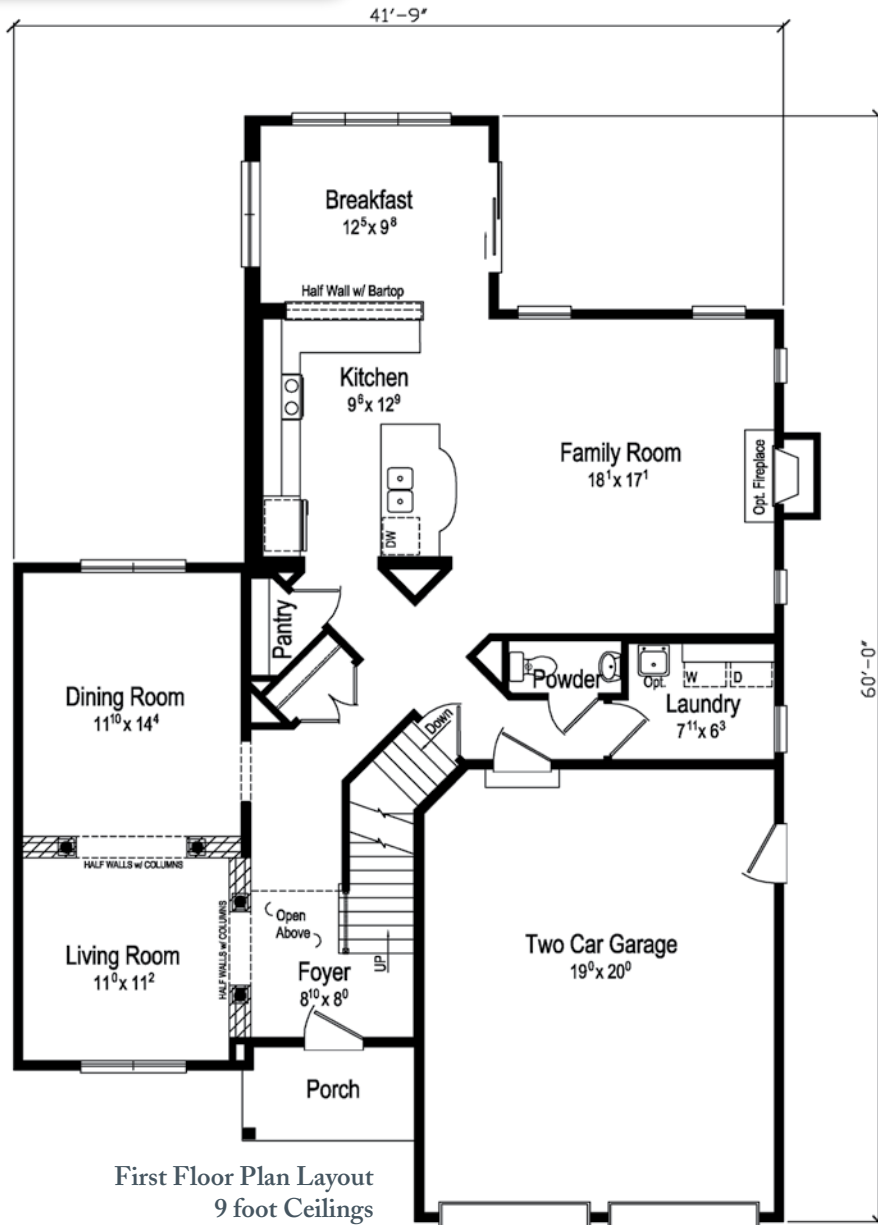
a light-filled breakfast room, separate dining room and living room featuring architectural columns and half walls, and a professionally designed kitchen with separate pantry and oversized center island. And, of course, Excel Homes offers hundreds of customization options and more than 100 color choices for your home.

PLAN: DEVLYN

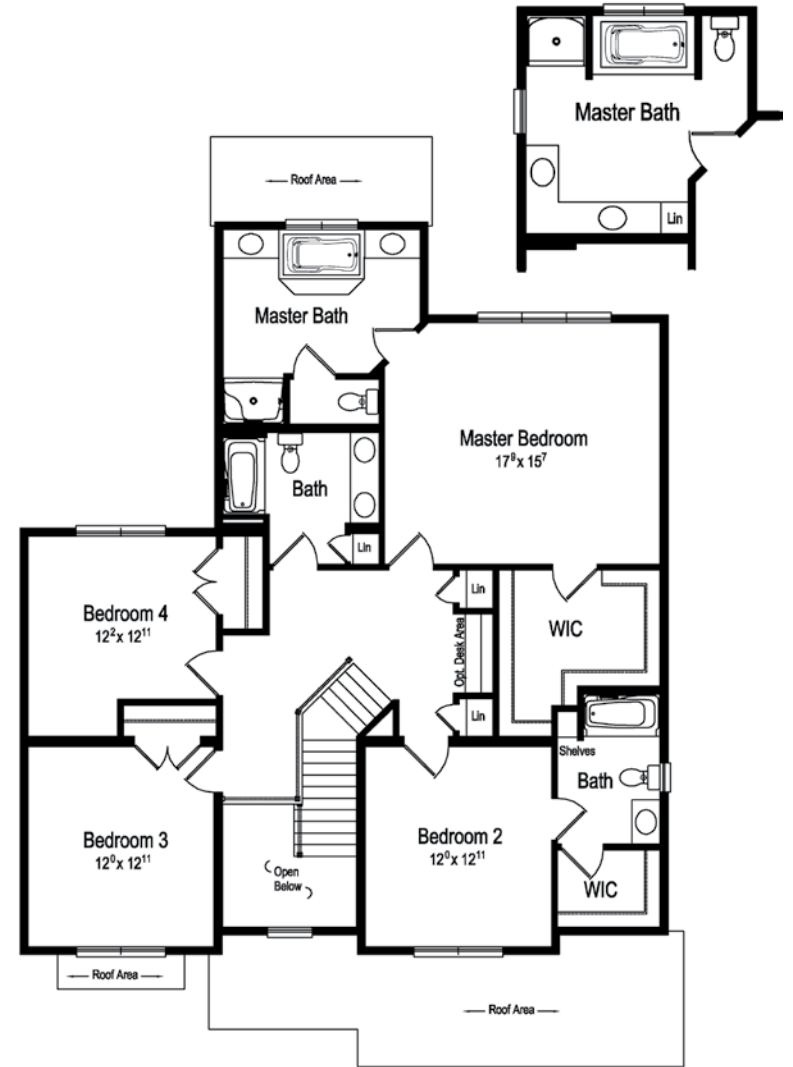
1st Floor = 1380

2nd Floor = 1544

Total = 2924 S.F.



First Floor Plan Layout
9 foot Ceilings



Second Floor Plan Layout
8 foot Ceilings
Optional Master Bath



Excel Homes, LLC.
excelhomes.com



See what Excel can do.