



JUST IMAGINE THE VIEWS YOU'LL SEE

Designed to be built on piers, the Coastal-style Seaview home plan can also be built on traditional foundations and fits most narrow lots. The inverted floor plan offers 3 bedrooms and 2½ baths, including a master with separate shower and tub, with the option of 9-foot ceilings on both floors. Expansive

and decks. Other amenities include an open great room, a professionally designed kitchen with large pantry and raised breakfast bar, a separate breakfast room and dining room. There's space for parking on the ground level under the home. And, of course, Excel Homes offers hundreds of

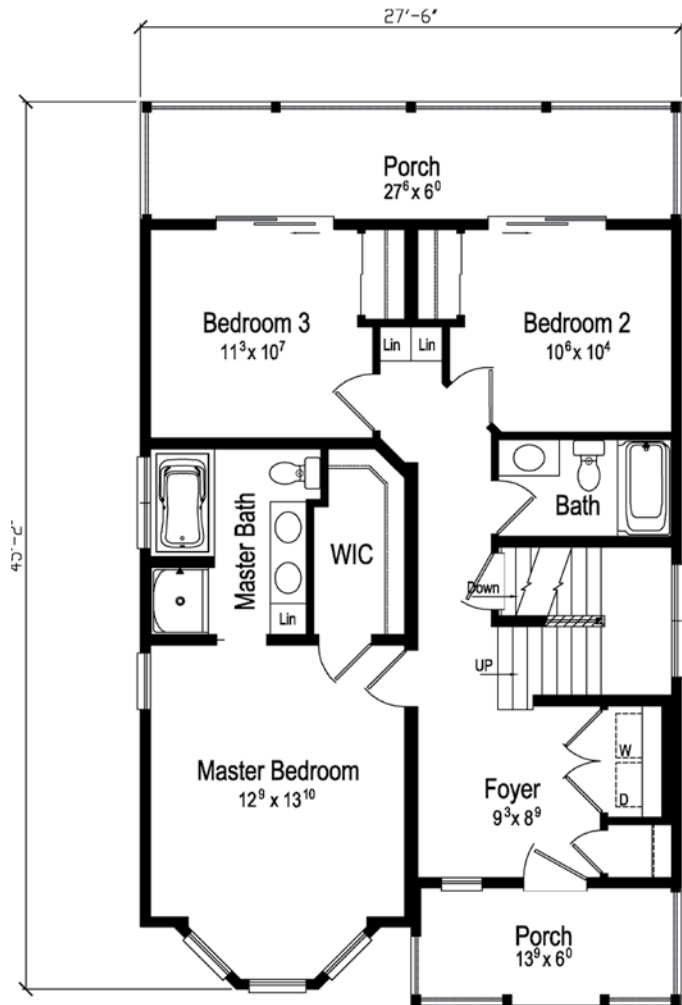
PLAN: SEAVIEW

1st Floor = 986

2nd Floor = 986

Total = 1972 S.F.

Second Floor Plan Layout
8 foot Ceilings
Shown with Optional 9 foot Ceilings



First Floor Plan Layout
9 foot Ceilings

