



OPEN FLOOR PLAN FOR PEOPLE ON THE GO

The stylish comfort of the Stiles home plan makes it an attractive option for today's active family. With 4 bedrooms and 2½ baths, its open floor plan in classic American design provides a two-story foyer with a vaulted ceiling, display shelves and arched entryways. A formal dining room is graced with

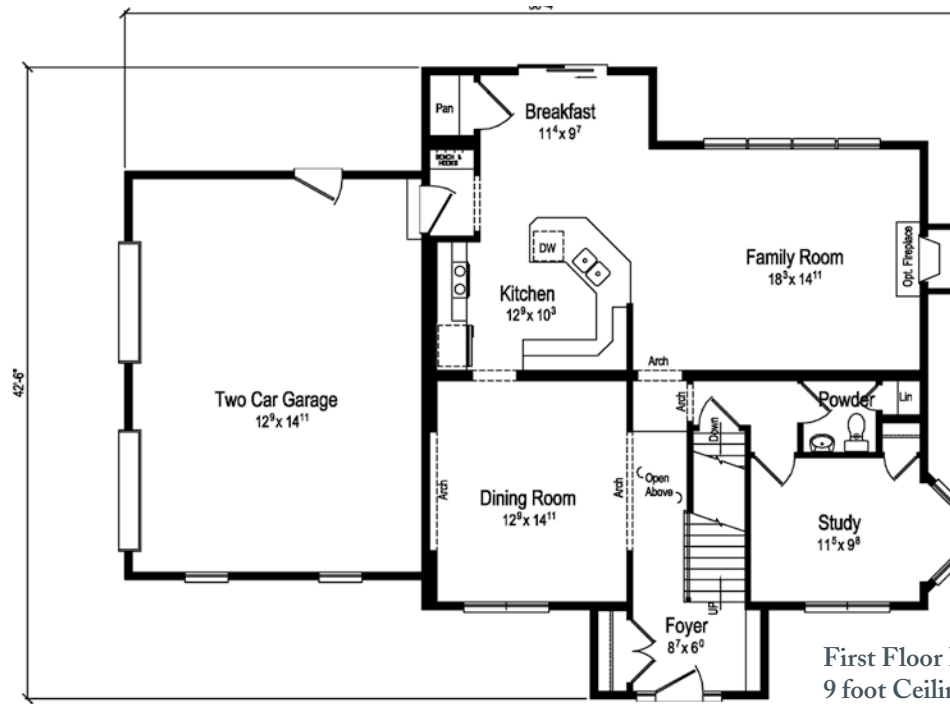
A second floor laundry saves time and the spacious master bedroom offers a sitting area for cozy chats. Rounding out the amenities are a professionally designed eat-in kitchen with pantry and built-in bench with a coat rack at the entry to the two-car garage. And, of course, Excel Homes offers hundreds

PLAN: STILES

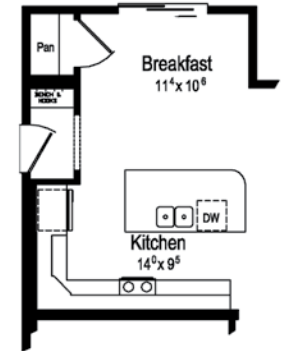
1st Floor = 1235

2nd Floor = 1518

Total = 2753 S.F.



First Floor Plan Layout
9 foot Ceilings
Optional Kitchen



Second Floor Plan Layout
8 foot Ceilings
Optional Master Suite

