



See what Excel can do.

**SERIES:** generation  
**PLAN:** TIDEWATER

excelhomes.com



## TIDEWATER HAS ROOM TO ROAM

With its first floor master suite and three large upstairs bedrooms with walk-in closets, the Tidewater is a great family home. Presented in a traditional farmhouse style, it comes with 3½ baths, a separate

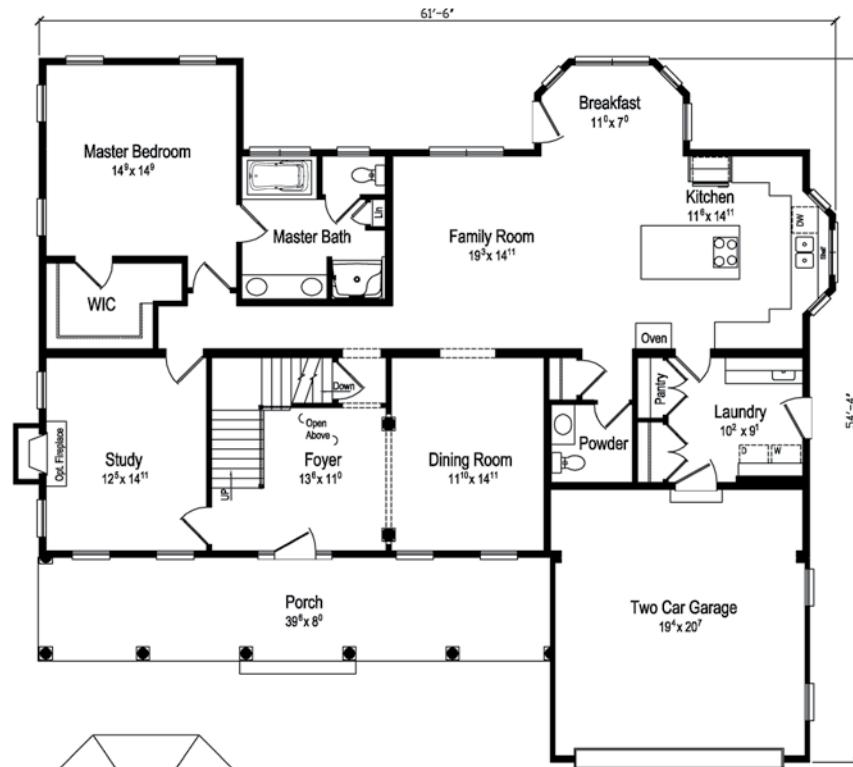
formal dining room and professionally designed eat-in kitchen with oversized center island, separate cooktop and oven, and large storage pantry. And, of course, Excel Homes offers hundreds of customization options

# PLAN: TIDEWATER

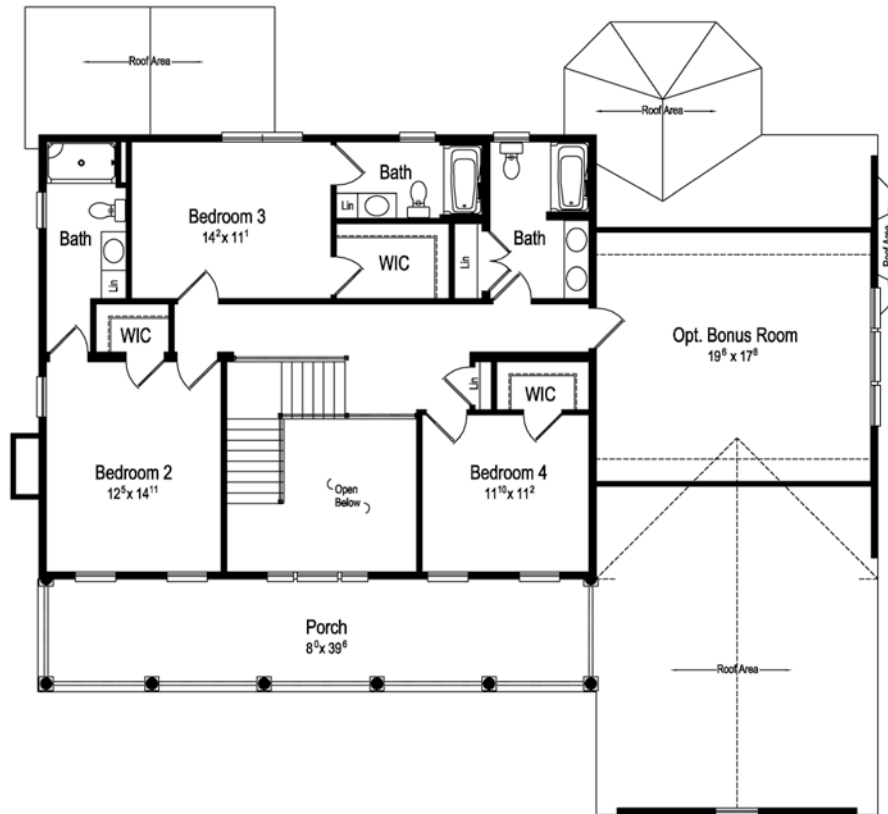
1st Floor = 1989

2nd Floor = 1150

Total = 3139 S.F.



First Floor Plan Layout  
9 foot Ceilings  
Optional Master Bath



Second Floor Plan Layout  
8 foot Ceilings



Excel Homes, LLC.  
excelhomes.com

